



**1100 PERSHALL ROAD
ST. LOUIS, MO 63137
(314) 867-1100
FAX: (314) 867-6261**

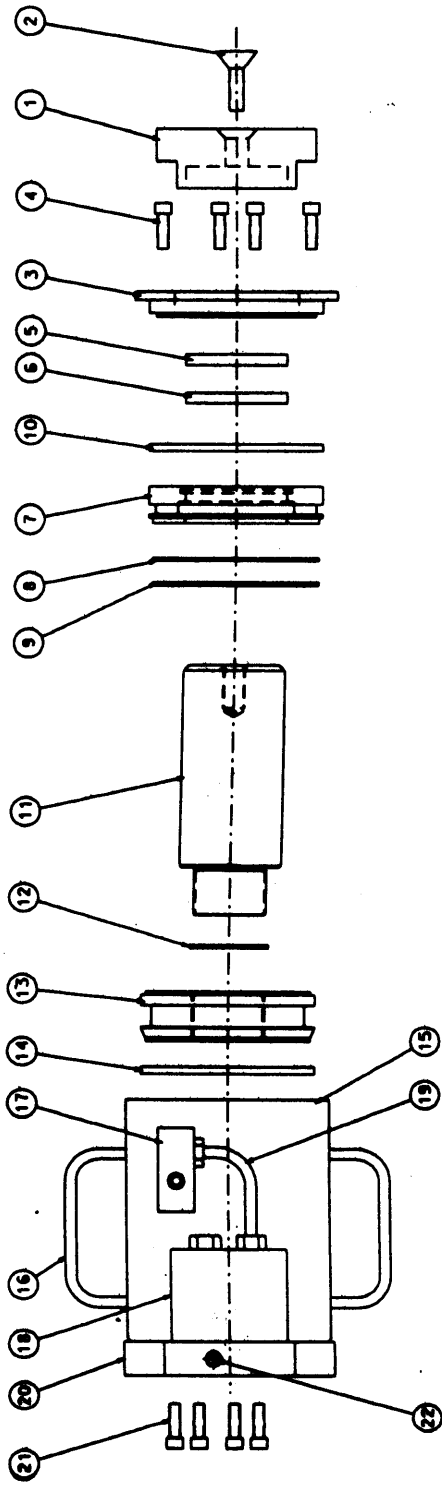
"HYDRAULIC EQUIPMENT SALES & SERVICE"

SPECIFICATIONS
RRC6-12-44
HIGH PRESSURE HYDRAULIC JACKS

6" BORE HYDRAULIC CYLINDER
4400 PSI. OPERATING PRESSURE (EXTEND)
1500 PSI. OPERATING PRESSURE (RETRACT)
62 ½ TON LIFTING CAPACITY
5 1/4" STROKE LENGTH
PILOT OPERATED SAFETY CHECK VALVE
3 ½" PISTON SHAFT
URETHANE SEALS
7" X 11" KEYHOLE BASE
2- LIFTING HANDLES FOR CARRYING
5" DIAMETER ROUGH TREAD HEAD ASSEMBLY



IF WE CAN'T REPAIR IT, SCRAP IT!



6" SHORT RAILROAD CYLINDER

<u>ITEM</u>	<u>PART NUMBER</u>	<u>DESCRIPTION</u>	<u>QTY.</u>
1	RRSTC-6	TREAD CAP	1
2	RRC6-TCB	TREAD CAP BOLT	1
3	RRSC-TP	HEAD PLATE	1
4	SH0312-1000	5/16 X 1" SOCKET HEAD CAP SCREW	4
5	*	ROD WIPER	1
6	*	ROD SEAL	1
7	RRSC6-HG	CYLINDER HEAD	1
8	*	O-RING	1
9	*	BACKUP RING	1
10	*	RETAINING RING	1
11	RRSC6-3.5S	CHROME SHAFT	1
12	*	O-RING	1
13	RRSC6-P	CYLINDER PISTON	1
14	*	PISTON SEAL	1
15	RRSC6-BA	BARREL	1
16	RRSC6-H	HANDLE	2
17	RRSC6-PORT	BARREL PORT	1
18	RR06	VALVE	1
19	RRSC6-OL	OIL LINE ASSEMBLY	1
20	RRSC6-BP	BASE PLATE	1
21	SH0375-1750	3/8 X 1 3/4" SOCKET HEAD CAP SCREW	4
22	H7237-4	HEX HEADED O-RING PLUG	1
*	SRR6SK	SEAL KIT CONTAINING ALL PARTS WITH *	