



**1100 PERSHALL ROAD
ST. LOUIS, MO 63137
(314) 867-1100
FAX: (314) 867-6261**

"HYDRAULIC EQUIPMENT SALES & SERVICE"

**SPECIFICATIONS
RRC6-12-44
HIGH PRESSURE HYDRAULIC JACKS**

6" BORE HYDRAULIC CYLINDER

4400 PSI. OPERATING PRESSURE (EXTEND)

1500 PSI. OPERATING PRESSURE (RETRACT)

62 ½ TON LIFTING CAPACITY

5 1/4" STROKE LENGTH

PILOT OPERATED SAFETY CHECK VALVE

3 ½" PISTON SHAFT

URETHANE SEALS

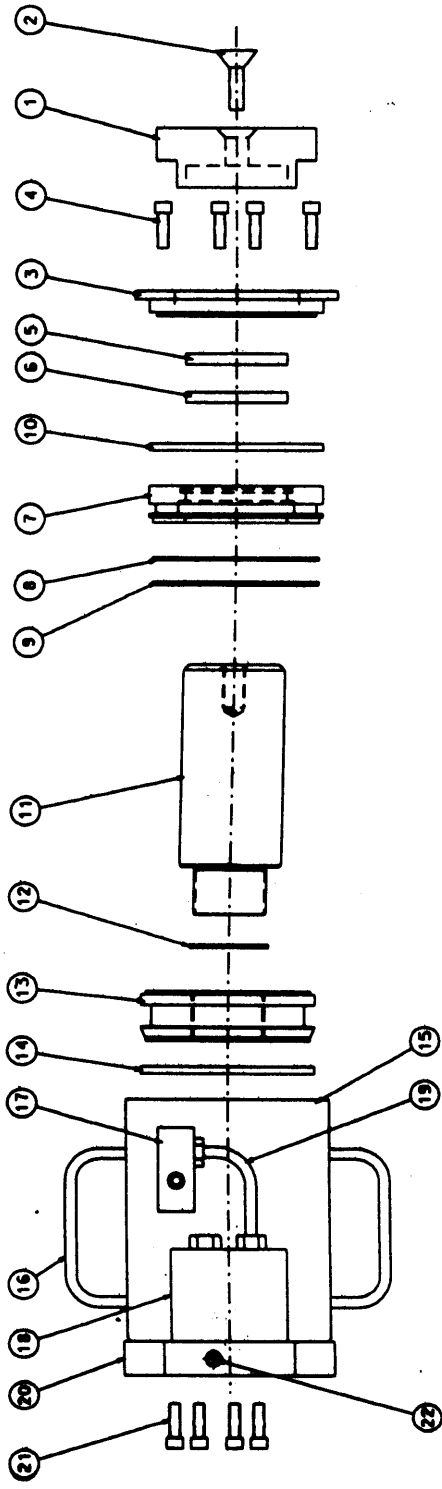
7" X 11" KEYHOLE BASE

2- LIFTING HANDLES FOR CARRYING

5" DIAMETER ROUGH TREAD HEAD ASSEMBLY



IF WE CAN'T REPAIR IT, SCRAP IT!



6" SHORT RAILROAD CYLINDER

| <u>ITEM</u> | <u>PART NUMBER</u> | <u>DESCRIPTION</u> | <u>QTY.</u> |
|-------------|--------------------|--------------------------------------|-------------|
| 1 | RRSTC-6 | TREAD CAP | 1 |
| 2 | RRC6-TCB | TREAD CAP BOLT | 1 |
| 3 | RRSC-TP | HEAD PLATE | 1 |
| 4 | SH0312-1000 | 5/16 X 1" SOCKET HEAD CAP SCREW | 4 |
| 5 | * | ROD WIPER | 1 |
| 8 | * | ROD SEAL | 1 |
| 7 | RRSC6-HG | CYLINDER HEAD | 1 |
| 8 | * | O-RING | 1 |
| 9 | * | BACKUP RING | 1 |
| 10 | * | RETAINING RING | 1 |
| 11 | RRSC6-3.5S | CHROME SHAFT | 1 |
| 12 | * | O-RING | 1 |
| 13 | RRSC6-P | CYLINDER PISTON | 1 |
| 14 | * | PISTON SEAL | 1 |
| 15 | RRSC6-BA | BARREL | 1 |
| 18 | RRSC6-H | HANDLE | 2 |
| 17 | RRSC6-PORT | BARREL PORT | 1 |
| 18 | RR06 | VALVE | 1 |
| 19 | RRSC6-OL | OIL LINE ASSEMBLY | 1 |
| 20 | RRSC6-BP | BASE PLATE | 1 |
| 21 | SH0375-1750 | 3/5 X 1 3/4" SOCKET HEAD CAP SCREW | 4 |
| 22 | H7237-4 | HEX HEADED O-RING PLUG | 1 |
| * | SRR6SK | SEAL KIT CONTAINING ALL PARTS WITH * | |