



HYDRAULIC EQUIPMENT SALES & SERVICE

1100 Pershall Road • St. Louis, MO 63137

At the intersection of Lilac and I-270

(314) 867-1100 • Fax (314) 867-6261

SPECIFICATIONS

RRC6-28-44

HIGH PRESSURE HYDRAULIC JACKS

6" BORE HYDRAULIC CYLINDER

4400 PSI. OPERATING PRESSURE

62 ½ TON LIFT CAPACITY

16" STROKE LENGTH

PILOT OPERATED SAFETY CHECK VALVE

3 ½" PISTON SHAFT

URETHANE SEALS

4- GUSSET BASE PLATE

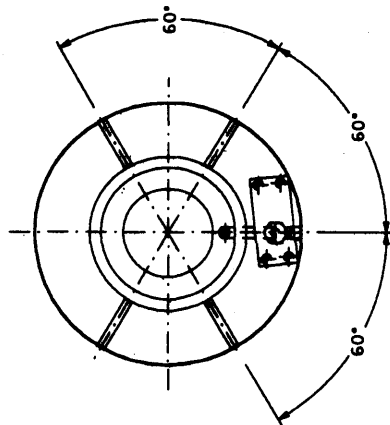
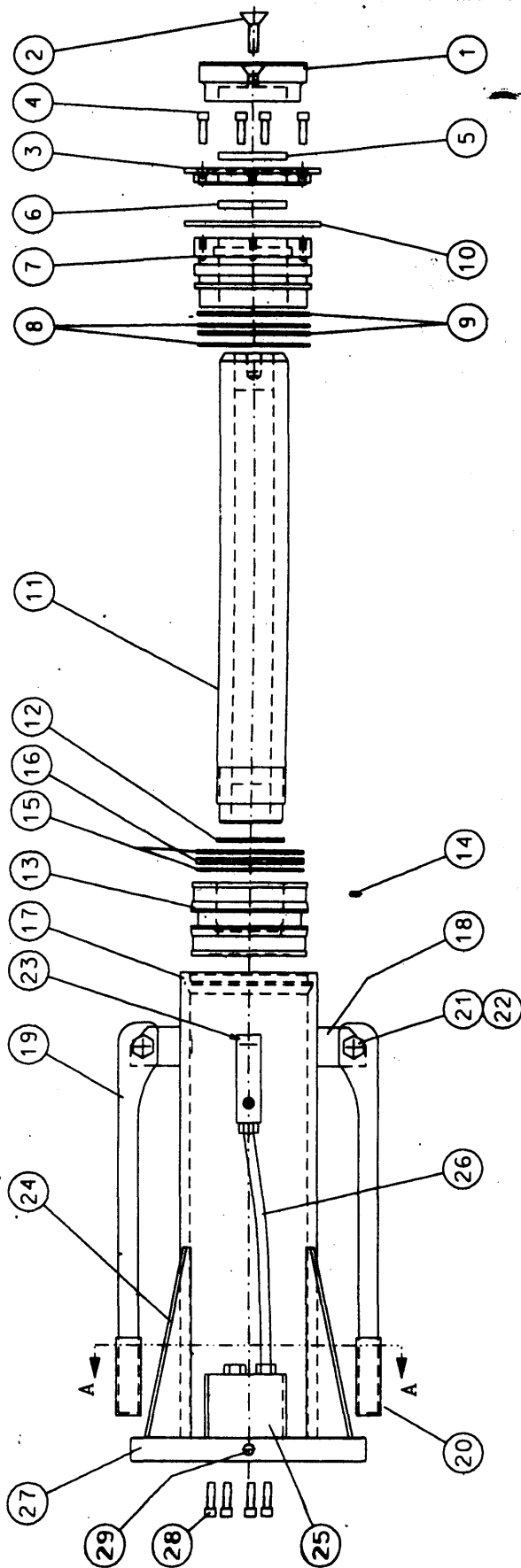
2- LIFTING HANDLES FOR CARRYING

GUARD AROUND VALVE ASSEMBLY

5" DIAMETER ROUGH TREAD HEAD ASSEMBLY



If we can't repair it, scrap it.



SECTION A-A

D. WERTS	RSV	2-1-99	1/1
RAILROAD CYLINDER ASSEMBLY			
VALTEC HYDRAULICS ST. LOUIS, MISSOURI			RRC6-28-44

**VALTEC HYDRAULICS
RAILROAD CYLINDER**

<u>ITEM</u>	<u>PART NUMBER</u>	<u>DESCRIPTION</u>	<u>QTY.</u>
1	RRLTC-6	TREAD CAP	1
2	RRC6-TCB	TREAD CAP BOLT	1
3	RRLC-TP	HEAD PLATE	1
4	SH0312-1000	5/16 x1" SOCKET HEAD CAP CREW	4
5	*	ROD WIPER	1
6	*	ROD SEAL	1
7	RRLC6-HG	CYLINDER HEAD	1
8	*	O-RING	2
9	*	BACK-UP RING	2
10	*	RETAINING RING	1
11	RRLC6-3.55	CHROME SHAFT	1
12	*	O-RING	1
13	RRLC6-P	CYLINDER PISTON	1
14	*	SET SCREW	1
15	*	WEAR BAND	2
16	*	PISTON SEAL	1
17	RRLC6-B	BARREL	1
18	RRLC6-HB	HANDLE BRACKETS	2
19	61806	HANDLES	2
20	211769	HANDLE GRIPS	2
21	HX0500-2000	½ x 2 HEX HEAD CAP SCREW	2
22	LN0500	½ LOCK NUT	2
23	RRLC6-PORT.	BARREL PORT	1
24	RRLC6-G	GUSSET	4
25	RRO6	VALVE	1
26	RRLC6-HOSE	HOSE ASSEMBLY	1
27	RRLC6-BP	BASE PLATE	1
28	SH0375-1750	3/8 x 1 ¼ SOCKET HEAD CAP SCREW	4
29	H7237-6	HEX HEAD O-RING PLUG	1

* LRR6SK SEAL KIT CONTAINING ALL PARTS WITH *